

Noże tokarskie składane - Tocznie zewnętrzne - System mocowania D

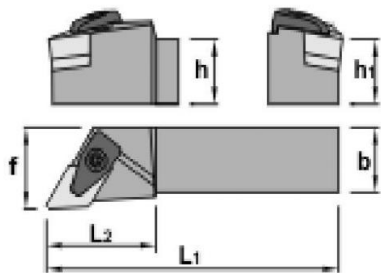
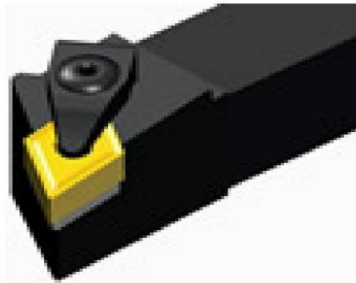
**DDJN 93°**

**Charakterystyka:**

Turning and profiling toolholder equipped with thombic double side inserts (angle 55°) witch strong cutting edges. The lever lock ensures good rigidity and chip flow in roughing applications.

**Zastosowanie:**

External turning and chamfering toolholder for general applications, roughing, semi-finishing and finishing



Axial: 6,25°  
Radial: -6,75°

| DDJN 93°        | h=h1 | b  | L1  | L2 | f  | Rozmiar płytek | Waga | Cena       |
|-----------------|------|----|-----|----|----|----------------|------|------------|
| DDJNR 2020 K 15 | 20   | 20 | 125 | 34 | 25 | DN..1506..     | 0,4  | 176,00 PLN |
| DDJNL 2020 K 15 | 20   | 20 | 125 | 34 | 25 | DN..1506..     | 0,4  | 176,00 PLN |
| DDJNR 2525 M 15 | 25   | 25 | 150 | 34 | 32 | DN..1506..     | 0,8  | 192,00 PLN |
| DDJNL 2525 M 15 | 25   | 25 | 150 | 34 | 32 | DN..1506..     | 0,8  | 192,00 PLN |
| DDJNR 3232 P 15 | 32   | 32 | 170 | 34 | 40 | DN..1506..     | 1,3  | 208,00 PLN |
| DDJNL 3232 P 15 | 32   | 32 | 170 | 34 | 40 | DN..1506..     | 1,3  | 208,00 PLN |

Gdańska 10  
70-660 Szczecin  
\* Telefon: +48 91 489 63 62  
\* Telefon: +48 500 189 009  
\* Fax: +48 91 462 30 00  
\* E-mail: [baltictool@baltictool.com](mailto:baltictool@baltictool.com)

13-03-2010